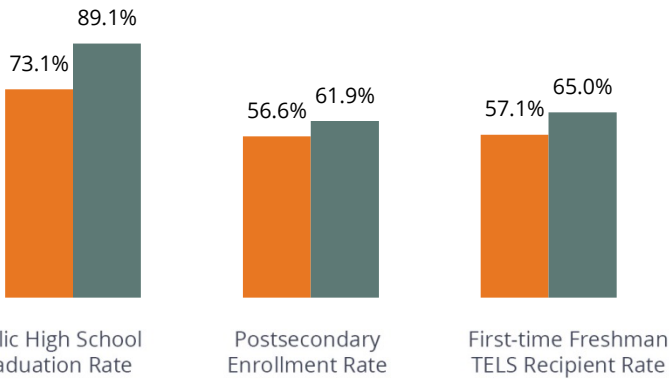


2017 Higher Education County Profile

Lake County

County Education Snapshot

County Tennessee



Note: 2016 Public HS Grad Rate; provided by TDOE. College Going Rate for 2015 HS grads provided by THEC. TELS Recipient Rate for 2015-2016.

Education Attainment Rate	County	TN
Adults with HS+	71.7%	85.5%
Adults with A.A.+	11.8%	31.5%
Adults with B.A.+	8.9%	24.9%
Recent High School Graduate Avg ACT	18.2	19.9
Socioeconomic Profile	County	TN
Median Household Income	\$30,086	\$45,219
Per Capita Personal Income	\$12,810	\$25,227
Population in Poverty Rate	27.0%	17.6%
Unemployment Rate	3.1%	5.1%
Population Ages 0-19	17.6%	25.6%
Population Ages 20-64	67.9%	59.9%
Rate of Population Growth (2011-2015)	3.9%	4.8%
Population Projections (2015-2025)	7.6%	11.2%

Tennessee Education Lottery Scholarship Recipients

Scholarship	Number of Recipients
HOPE Scholarship	19
HOPE with GAMS	-
HOPE with Aspire	11
Access Award	-
Dual Enrollment Grant	34
HOPE Foster Care Grant	-
Non-Traditional Student Scholarship	-
Wilder-Naifeh Technical Skills Grant	24
Total	98

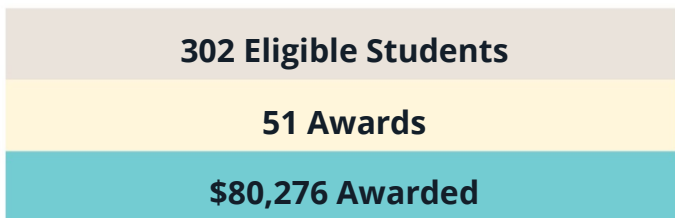
Tennessee Promise Applications

	14-15	15-16	16-17
Number of High School Seniors	57	56	52
Tennessee Promise Applications	54	56	52
Percent of High School Seniors Applied	94.7%	100.0%	100.0%

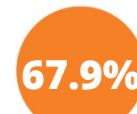
Top Colleges Selected by 2015 High School Graduates

- Dyersburg State Community College - 11
- TCAT Newbern - 6
- University of Memphis
- University of Tennessee, Martin
- Austin Peay State University

Tennessee Student Assistance Award



FAFSA Filing Rate*



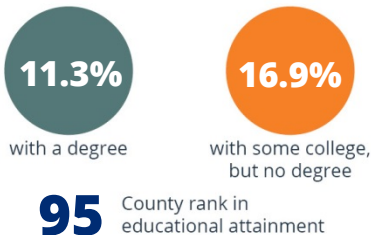
County



Tennessee

*Filing rate for the 2016-2017 FAFSA.

County Educational Attainment, Adults Age 25-64



Reaching the Drive to 55 in Lake County

Number of degrees county needs to produce per year until 2025 for Tennessee to reach the goals of the Drive to 55:

161

To increase the county's college-going rate by 5 percent, number of additional students that must enroll in college in the next year:

3

Tennessee Higher Education Commission & Tennessee Student Assistance Corporation in Lake County



\$1,075,000

awarded to Dyersburg State Community College through the Drive to 55 Capacity Fund to increase capacity for the school's nursing program. Lake County is served by Dyersburg State.



\$75,000 awarded

to Dyersburg State Community College to develop campus programs that assist Tennessee Promise students in succeeding, persisting, and graduating.

Lake County is served by Dyersburg State Community College.



Lake County High School

was selected as an Advise TN high school. The school receives services through a full-time college access advisor who provides intensive advising services to juniors and seniors.

TSAC Outreach in Lake County

1 General Visit

Total outreach during 2015-16 academic year.

TSAC Outreach Specialist for Lake County:
Abby Nichols, abby.nichols@tn.gov



\$225,000

grant to the Obion County Chamber of Commerce to develop regional centers that will provide adults with free advising, career counseling, support, a personalized path to and through college, and connect stakeholders in adult education. Service area of four counties, including Lake County.



\$850,000

from the CPT Pathway to Advanced Manufacturing LEAP 1.0 grant, led by Dyersburg State Community College and the Northwest Tennessee Workforce Board, to eleven West Tennessee counties, including Lake County.



have successfully completed the SAILS (Seamless Alignment and Integrated Learning Support) Math co-requisite remediation model to decrease the number of students requiring remediation in college.



Events that provide college-going resources and increase college-going culture.

Lake County High School
College App Week School